

Beacon House Training Services



About Beacon House

Beacon House is a visionary, dynamic and thriving multidisciplinary service based in West Sussex. We aim to offer a high quality, innovative, attachment and trauma informed therapeutic service to children and adults, and their families and networks. Our specialist team of therapists provide assessment and therapy to children, families and adults experiencing a wide range of emotional, relational and sensory difficulties.

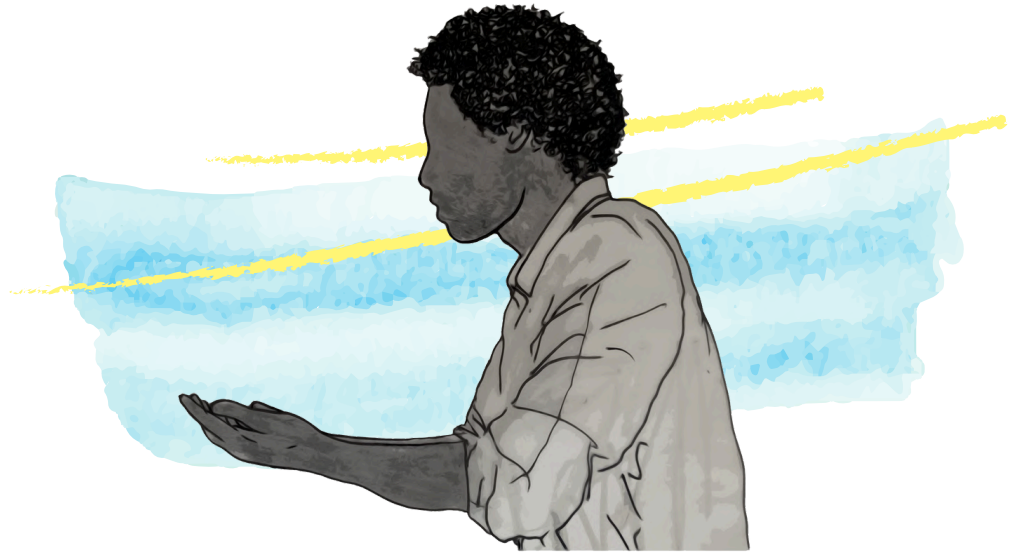
We are passionate about bringing attachment and trauma-informed theory to the applied practice of a wide range of practitioners who work with children and young people. Our priority is to disseminate the evidence base in a way that directly maps on to applied practice.

Our online and face to face training blends taught theory with beautiful and bespoke graphics and animations created by our in-house artist and Creative Designer, who also brings lived experience of trauma. We have created unique multi-media content, interactive experiential exercises and live demonstrations to stimulate and engage our learners. Our online packages are additionally accompanied by psycho-education and resource packages exclusive to online learners.



All live and remote training requests are carefully matched to the most suitable specialist in our therapeutic team. Take a look at who we have in our team here:

www.beaconhouse.org.uk/about-us/the-team/



Our training vision and all training content is overseen by our Clinical Director, Dr Shoshanah Lyons; and all our courses are beautifully curated by our talented in-house artist, Helen Townsend.



Dr Shoshanah Lyons is the clinical director and founder of Beacon House. As a clinical psychologist she feels huge passion for understanding mental health and relationships through a developmental trauma lens. She is a promoter and advocate for trauma-informed health, education, social care and criminal justice.



Helen Townsend is an artist and works at Beacon House as our Creative Designer. Combining inspiration from lived experience with academic training, she is passionate about translating complicated theories into accessible information that can be used in day to day life. As an adoptive parent Helen always aims to ensure ideas are realistic and practical for families.

As a service we are incredibly passionate about sharing our experience and knowledge of working with children, families and adults who have experienced early trauma and adversity. We have an exciting and innovative training offer designed with professionals, families and adults in mind. Training can be delivered:

- **In person** – commissioned by teams or organisations who can provide a venue
- As **live remote training** via Zoom for up to 200 participants
- Via our creative and beautiful range of **online training** courses which can be found here:
<https://beaconhouse.org.uk/training/>
- Our **webinar and workshop programme**. See here for more information.



In Person & Live Remote Training

If the training you require exists already in our library, the costs are as follows:

- **£1500** per day for delivery of training*
- **£500** per day for review of training content
- Travel at **£60** per hour and mileage at **£0.45** if delivered in person
- Digital support @ **£250** per day, if delivered via Zoom

If the training you are looking for requires us to create brand new content, the costs are as follows:

£1000 per day for delivery of training*

£1000 per day for training writing

£1000 per day for creative design, resource development, printing and administration

Travel at **£60** per hour and mileage at **£0.45** if delivered in person

Digital support @ **£250** per day, if delivered via Zoom

*Training groups over 35 in number will be charged at an additional £150 per 10 participants.

If your training request does not fit into either of the above categories, please do get in touch for a bespoke quotation.

Online training for single participants can be purchased directly through our website (www.beaconhouse.org.uk) and group licences can be arranged through our Training Administrator Rebecca Robertson on training@beaconhouse.org.uk or 01444 413 939



For all enquiries for in-person or remote training please also get in touch with Rebecca on the details above. Your specific organisational context and goals will be explored, and a training package will be agreed with our Clinical Director.

We are looking forward to hearing from you!

The Beacon House Training Team

